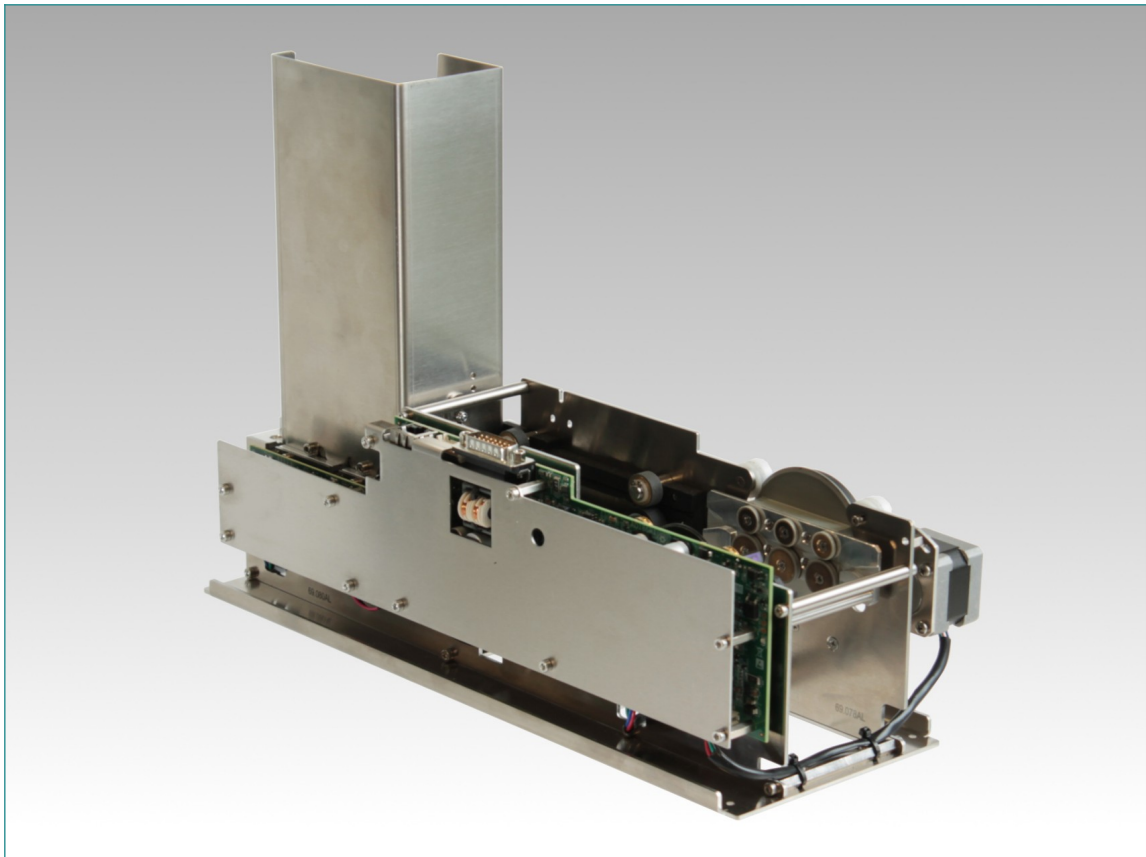




TLE 25 LASER ENGRAVING TRANSPORT SYSTEM



DESCRIPTION

The TLE 25 is the result of many years of experience in designing compact transport systems for Laser Engraving of ID1 cards. High performance and flexibility allow the device to be used with both chip cards and RFID cards, marking on both sides of the card, CLI marking and MRZ reading using an optical reader.

BASE VERSION FEATURES

The base version includes a card dispenser with a 200 cards capacity, removable card holder, the main transport module and the flip over module. Once the engraving is done, cards are ejected from the front under the card dispenser. Furthermore, cards can be swallowed in a collection bin under the flip over if the laser engraving did not produce the expected results.

CPU board features:

- CPU board with proprietary firmware
- ARM Cortex M3 CPU
- 64MB of RAM memory
- 16MB of flash memory
- Firmware based on custom embedded-linux OS

BASE VERSION OPTIONAL DEVICES

The base version can be equipped with additional modules such as contact pins module for chip cards and RFID reader for contactless cards. These modules

can also be installed at a later time and the base version supports both simultaneously, they both have a USB communication port, support the PC/SC protocol and can be connected directly to the host.

A card dispenser with a 300 cards capacity is optionally available.

OTHER FEATURES

New features that will extend the capabilities of the device are currently under development:

- Output card loader to support automatic card management.
- Support for 3 tracks ISO magnetic encoding for cards made of different materials, such as PVC, aluminum and stainless steel.

TECHNICAL DATA

Dimensions (mm.)

Base version	260 (H) x 346 (L) x 151 (W)
Base version with output card loader	260 (H) x 470 (L) x 151 (W)
Magnetic version	260 (H) x 550 (L) x 151 (W)
Magnetic version with output card loader	260 (H) x 675 (L) x 151 (W)

Power supply	24 VDC – 1 / 3.6A max
---------------------	-----------------------

Magnetic head average life	> 1.000.000 operations
-----------------------------------	------------------------

Interface	- EIA RS232C up to 115200bps - Ethernet
------------------	--

Protocol	Proprietary
-----------------	-------------

Certification	EN 61000-6-4
----------------------	--------------

ADEL S.r.l. reserves the right to modify technical data without prior notice